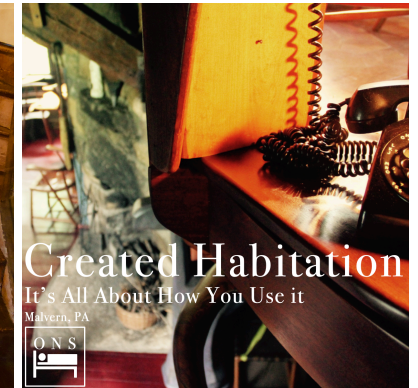
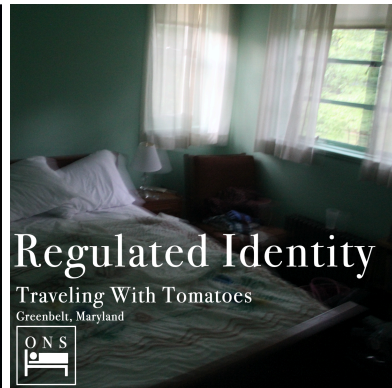
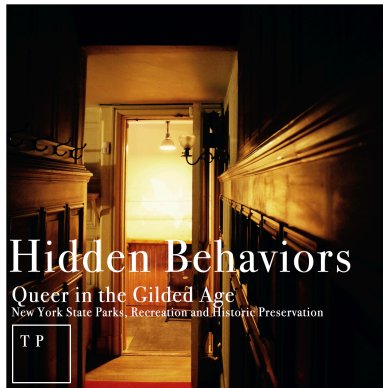


Queering Historic Sites

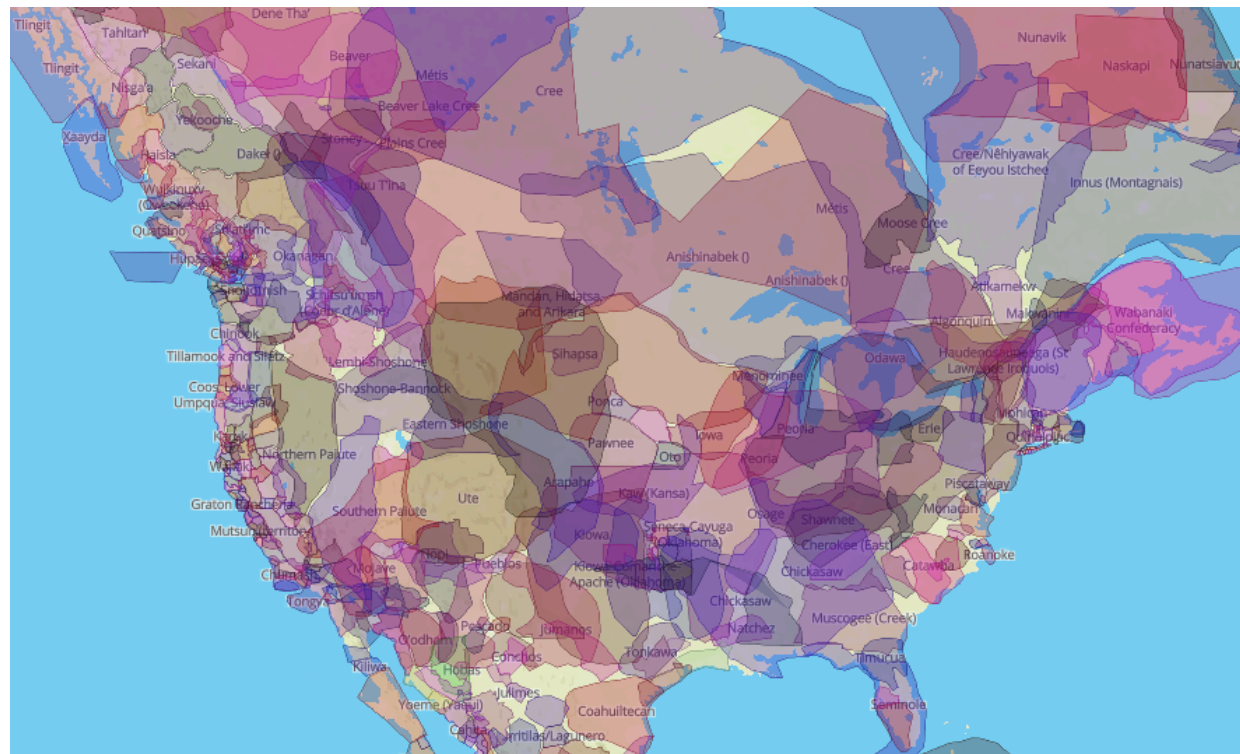


Twisted Preservation. com

Franklin Vagnone (he/him/homo)
@franklinvagnone (twitter) @fdvagnone (Instagram)

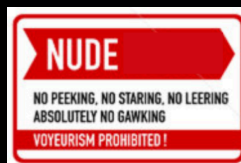
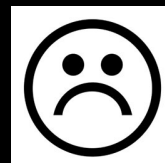
I would like to begin by acknowledging that the land on which I live, presently North Carolina, is the traditional territorial home to many Indigenous peoples at various points in time, including the tribes/nations of:

Bear River/Bay River, Cape Fear, Catawba, Chowanoke, Coree/Coranine, Creek, Croatan, Eno, Hatteras, Keyauwee, Machapunga, Moratoc, Natchez, Neusiok, Pamlico, Shakori, Sara/Cheraw, Sissipahaw, Sugeree, Wateree, Weapemeoc, Woccon, Yadkin, and Yeopim.



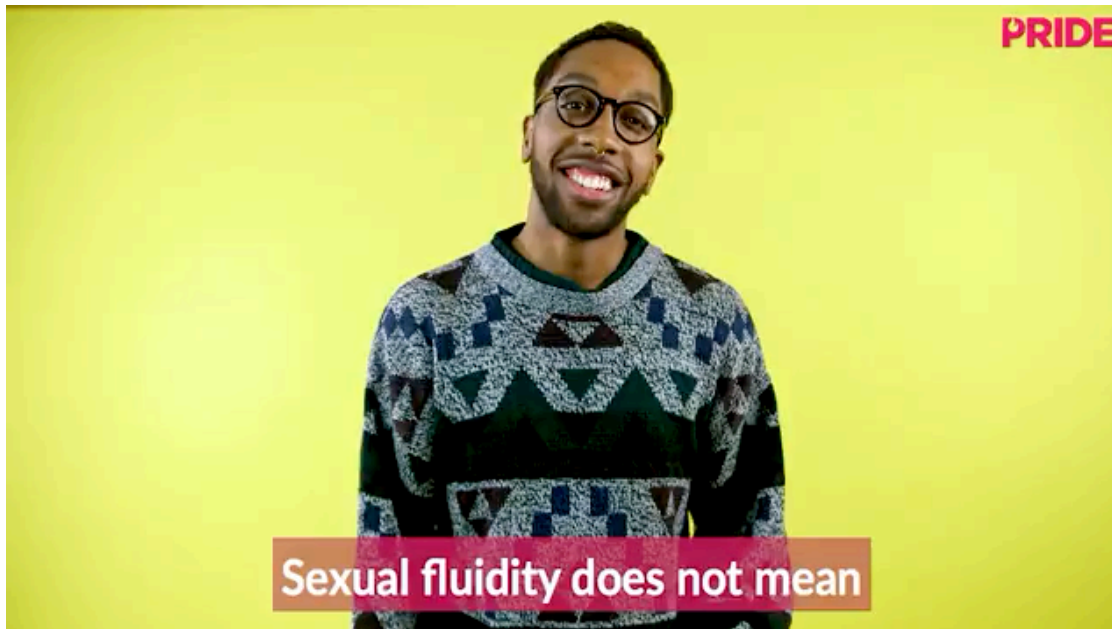
Disclaimer

queer, dyslexic, dumpster-diving, sculptor



Sexuality

The pansexual revolution: how sexual fluidity became mainstream



In 18-24 year olds who self-identify as same gender attracted

63% of the females
50% of the males
34% gender fluid

Consider themselves

Sexually fluid
 and
 object to categorization



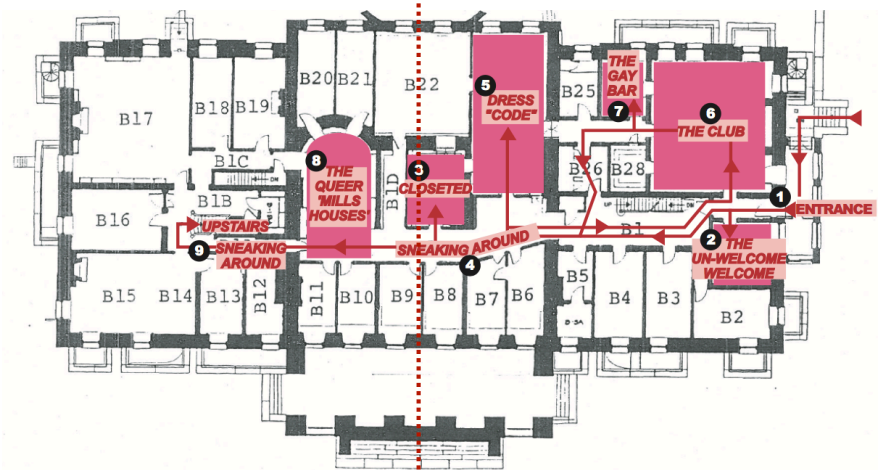
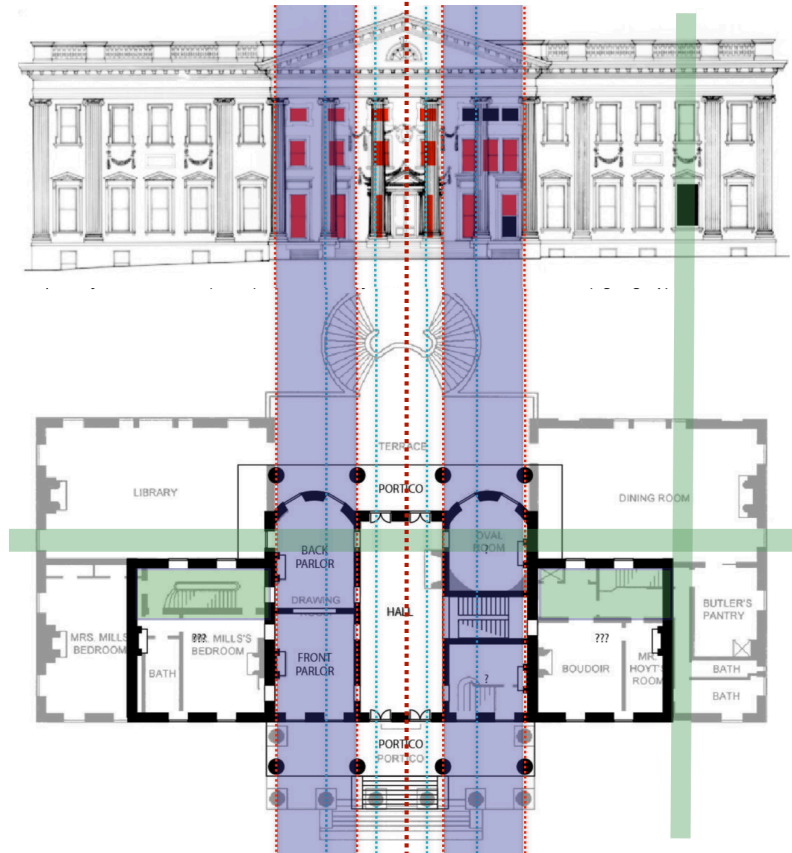
“Because sexual orientation involves a set of various life experiences over time, categories will always feel artificial and static.”

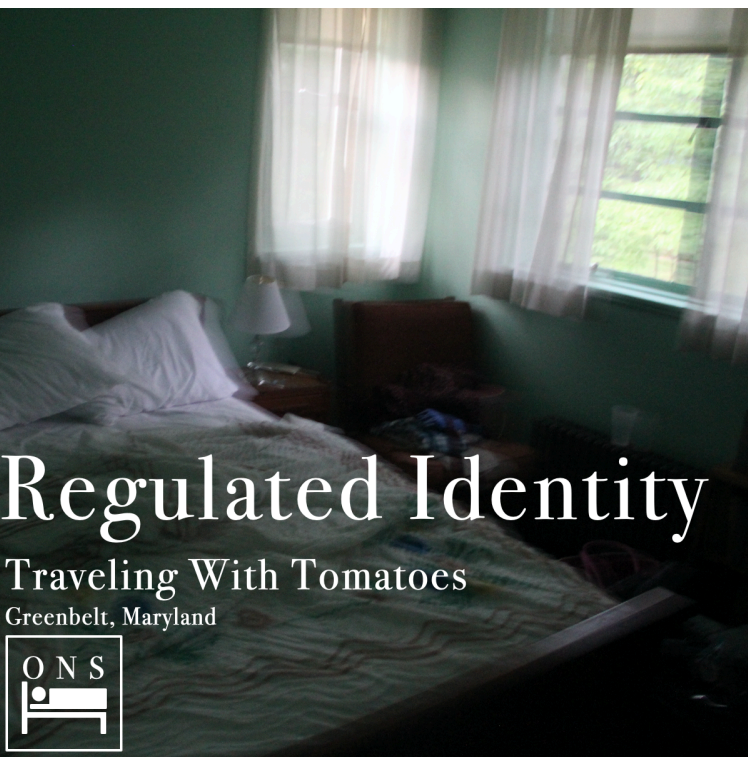
Hidden Behaviors

Queer in the Gilded Age
New York State Parks, Recreation and Historic Preservation

T P

Free Men, Freedmen, and Race:
Black Social Theory in the Gilded
Age

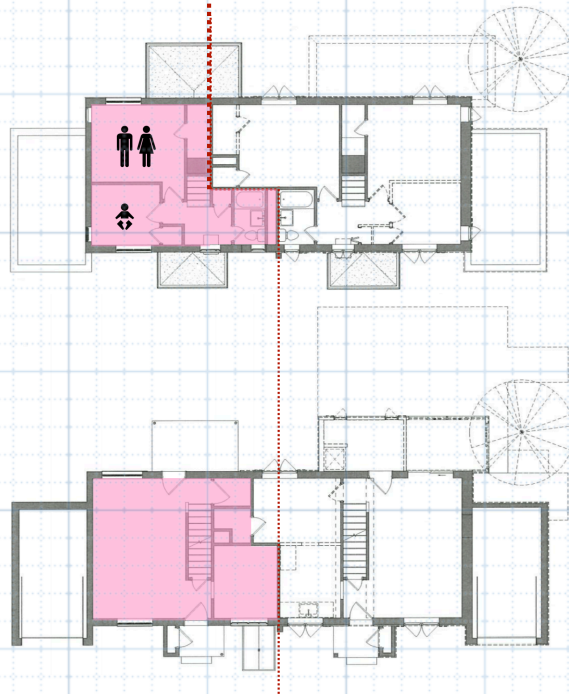
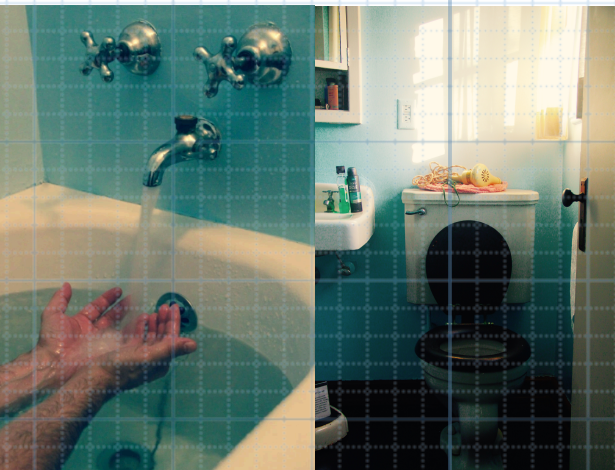




Regulated Identity

Traveling With Tomatoes

Greenbelt, Maryland

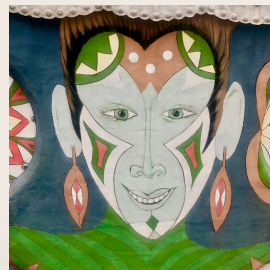
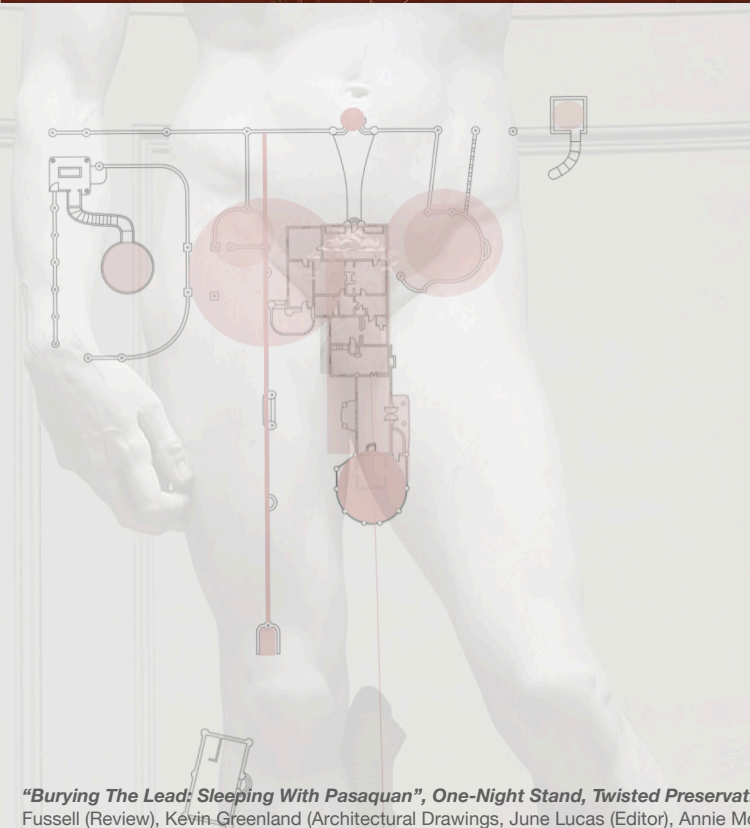




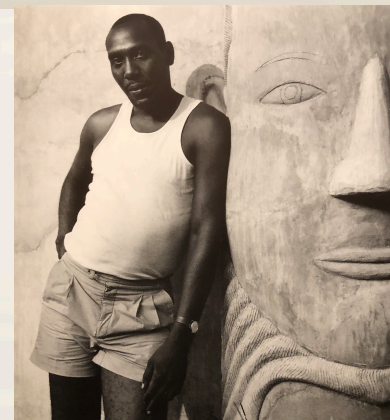
Manifest sexuality

Burying The Lead

Buena Vista, Georgia



Drag Queen Warrior Wall (from NYC hustling), Pasaquan Historic Site; Hells Kitchen Mid-50's streets, NYC, 1940's; Eddie Owen Martin in drag.



St. E.O.M at Pasaquan; Pasaquan Historic; Scotty Stewart long-time partner; Site landscape.



"Burying The Lead: Sleeping With Pasaquan", One-Night Stand, Twisted Preservation Cultural Consulting, Franklin Vagnone, John Yeagley (V. President), Dale Couth (Review), Ruthie Dibble (Review), Charles Fowler (Caretaker), Fred & Cathy Fussell (Review), Kevin Greenland (Architectural Drawings, June Lucas (Editor), Annie Moye (Chair Pasaquan Board), Tom Patterson (Author), Jon Prown (Review).

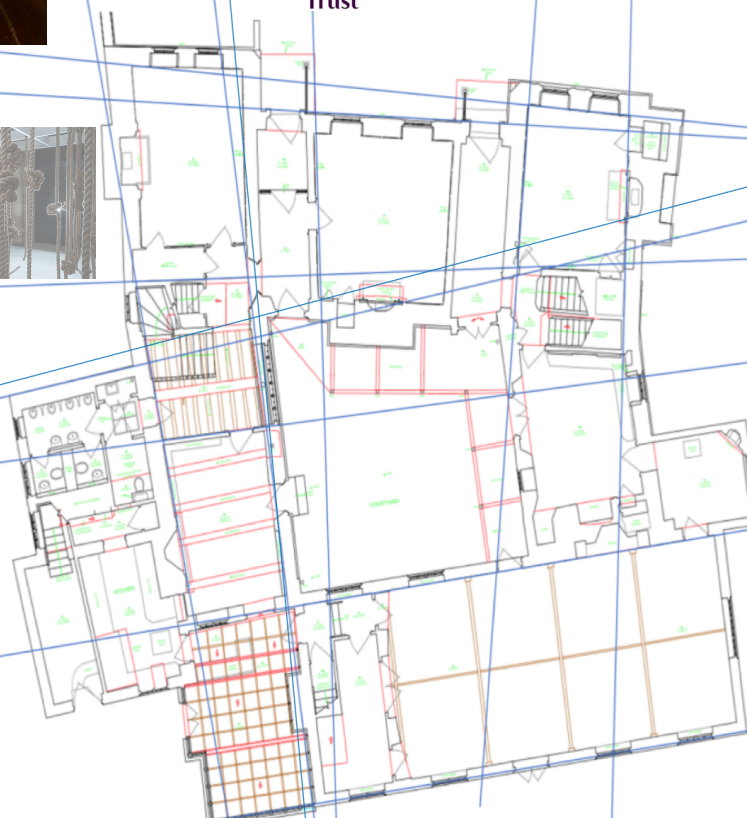
Queer Sensibility

Queering of Sutton House

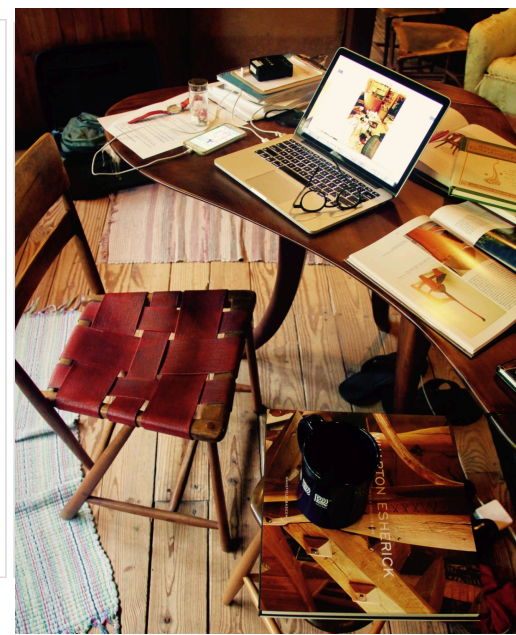
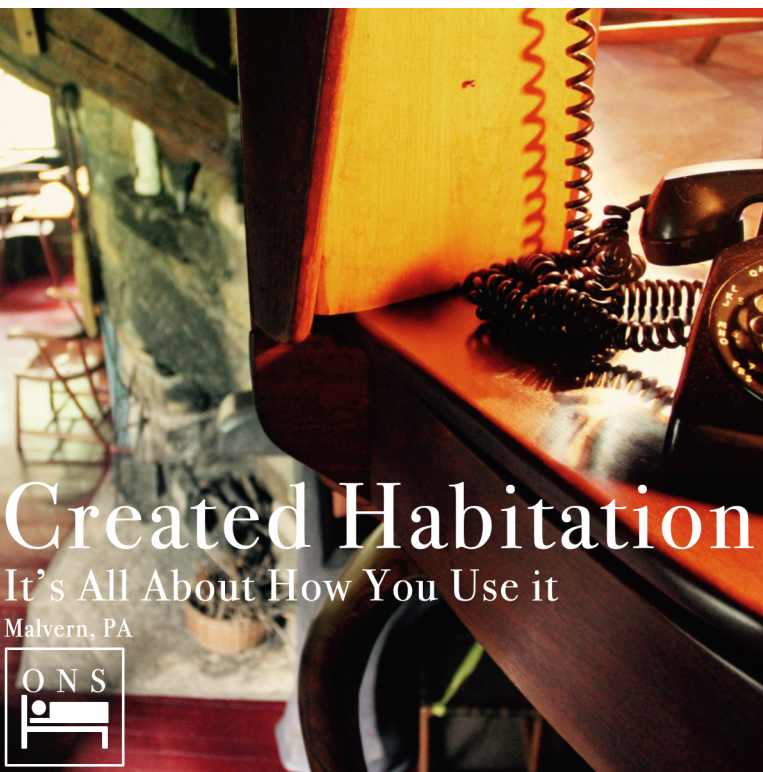
London, England



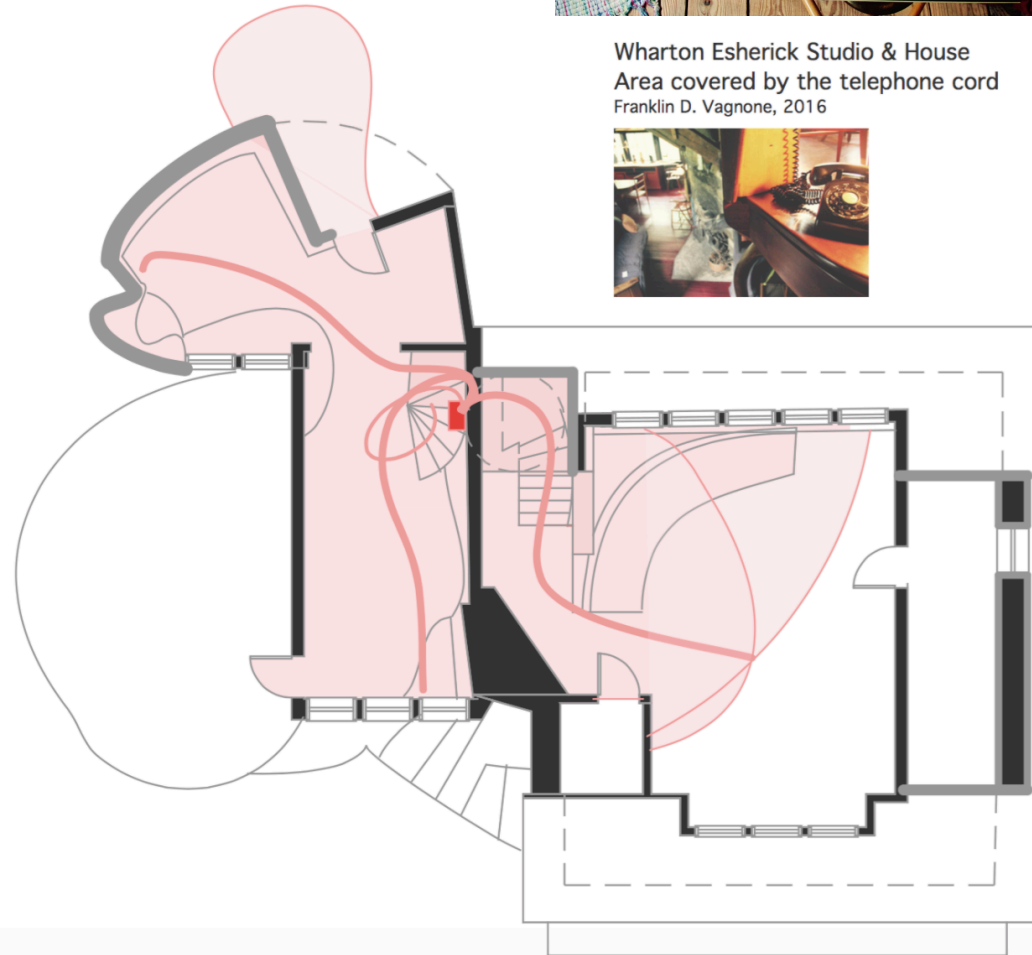
QUEER
Tango
LONDON



A Complicated Tango: One-night Stand, Twisted Preservation Cultural Consulting, Franklin Vagnone, John Yeagley (V. President), Tony Berry, National Trust of the UK, Sutton House staff (Chris Cleeve, Lauren "El Sweet", Queering of Sutton House Project Manager Sean Curran.



Wharton Esherick Studio & House
Area covered by the telephone cord
Franklin D. Vagnone, 2016



**HISTORY BEGINS
AT HOME.**
The Historic House Trust is a not-for-profit organization operating in tandem with the New York City Department of Parks & Recreation. Our mission is to provide essential support for houses of architectural and cultural significance, spanning 350 years of New York City life. These treasures reside within city parks and are open to the public.

PRINTING OF THIS NEWS-
LETTER IS GENEROUSLY
UNDERWRITTEN BY FORBES

PUBLISHED QUARTERLY
BY THE HISTORIC HOUSE
TRUST OF NEW YORK CITY.

No part of this newsletter may
be reproduced without the
permission of The Historic House
Trust of New York City, Inc.
ISSN 1083-3796



OWNING HISTORY

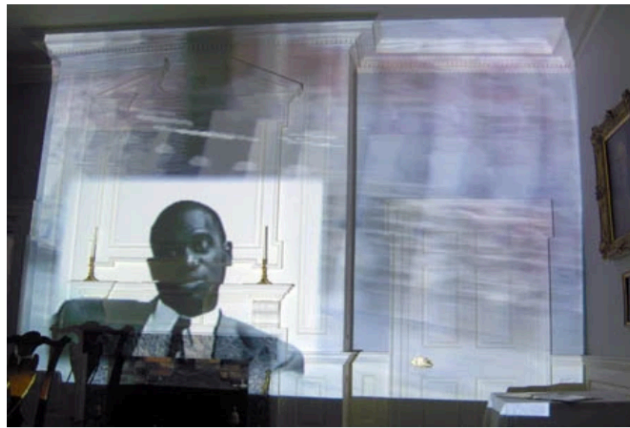
Making room for controversy, opinion, rumor and conjecture



A 2010 recreation of Alice Austen's "Group on Tennis Grounds, July 23, 1886." Photographer Steven Rosen presents a conjectural interpretation of Alice Austen's original image. Austen's family built a tennis court, and many of her photographs were taken during tennis parties there. They included a wide range of family and friends whose personal relationships would, at times, seep through the images. Some of these photographs, although they appear to be impromptu, are in fact and out of necessity highly planned and choreographed tableaux. They include nuanced symbols—the placement of tennis racquet, wine bottle, or cane, the angle of a hat, a shoulder slightly touching or a directed glance. These signs, seen as a language, give us clues for a fuller reading of gender, class, and social standards of the day. In recreating the image, photographer Steven Rosen magnifies these signs in the original photograph to produce new images full of conjectures about interpersonal relationships in 2010.

FALL 2010





LGBT Historic House Museum Nerds Unite!

Twisted Preservation

[Home](#) [Members](#) [Sponsors](#) [Photos](#) [Pages](#) [Discussions](#) [More](#)

[Group tools](#)  [My profile](#)

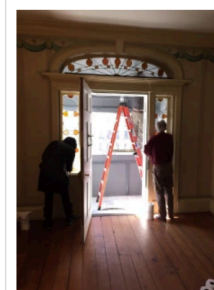
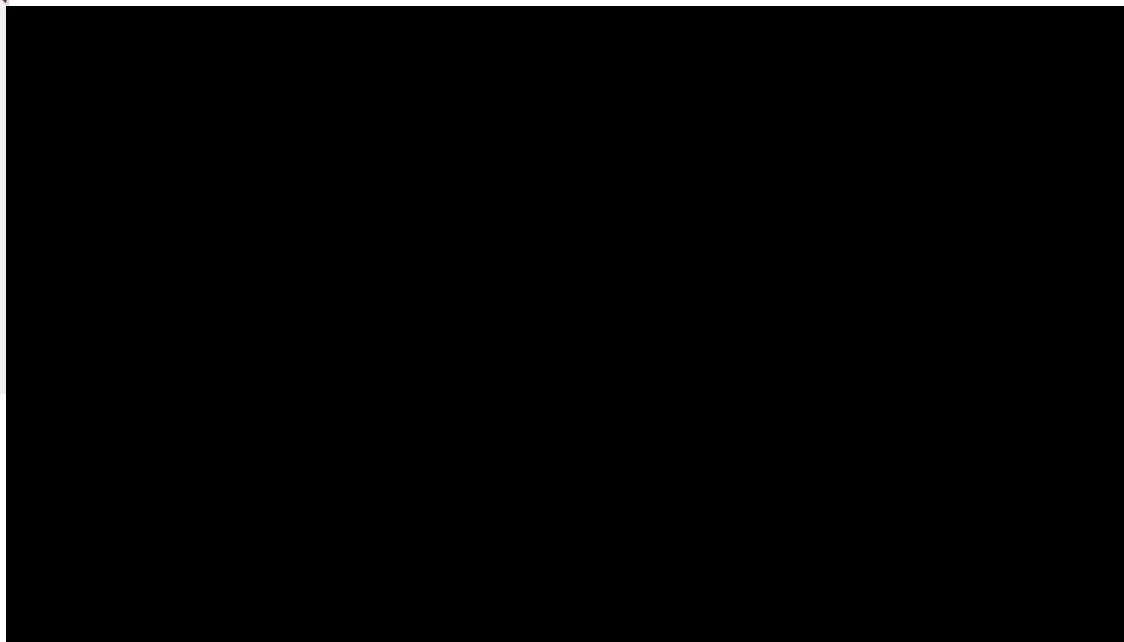
Calling all window
washing
aficionados!

[Change photo](#)

New York, NY

Founded May 4, 2013

FEATURED MEETUP



Your RSVP: Yes

[CHANGE](#)

[INVITE A FRIEND](#)

Tools

10 going



THINGS

GLOBAL CONVERSATIONS ABOUT STUFF

